



GMT MONTHLY MEMBERSHIP PROGRESS REPORT

Results as of: 1/31/2020

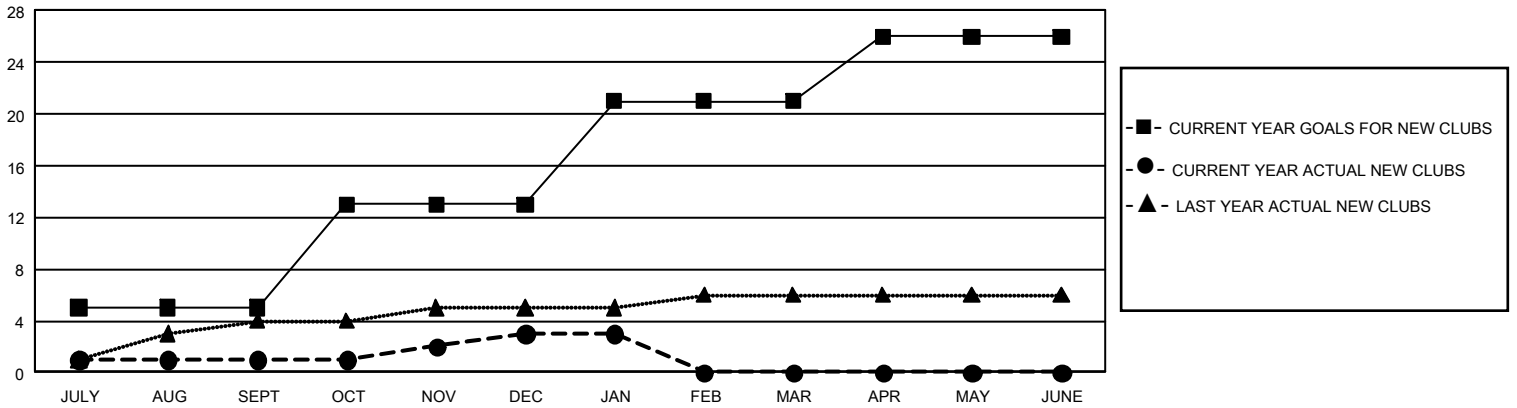
GMT Constitutional Area 2, Group B

GMT: OPEN

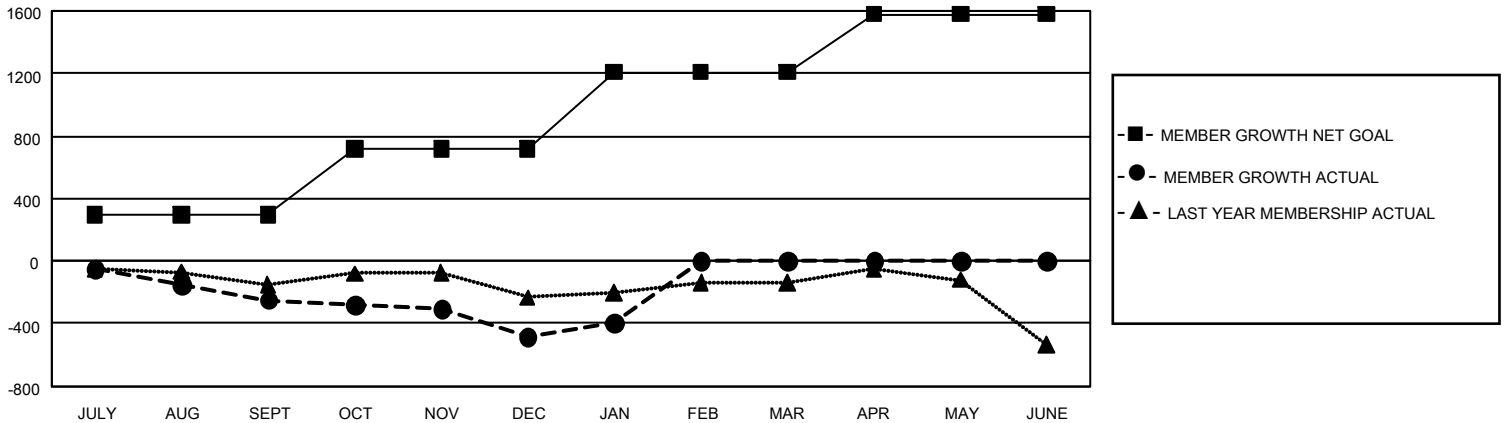
REPORT DOES NOT INCLUDE CLUBS IN UNDISTRICTED AREAS.

Clubs				Members			
RESULTS FOR 2019-2020				RESULTS FOR 2019-2020			
QUARTER	NEW CLUB GOAL	NEW CLUBS	DROPPED CLUBS	QUARTER	MEMBER GROWTH NET GOAL	MEMBER GROWTH ACTUAL	DROPPED MEMBERS ACTUAL (including transfers)
JULY/AUG/SEPT	15	1	3	JULY/AUG/SEPT	885	337	530
OCT/NOV/DEC	24	2	3	OCT/NOV/DEC	1,266	578	761
JAN/FEB/MAR	24	0	4	JAN/FEB/MAR	1,470	304	179
APR/MAY/JUNE	15	0	0	APR/MAY/JUNE	1,119	0	0

GOALS AND ACTUAL NEW CLUBS CUMULATIVE



GOALS AND ACTUAL MEMBERS CUMULATIVE



DROPPED CLUBS: 10	407 CLUBS OF 928 ADDED 1 OR MORE NEW MEMBERS	<u>GENDER DISTRIBUTION</u> MALE 14,486 (66.39%) FEMALE 7,333 (33.61%)
<u>DROPPED MEMBERS</u> DECEASED 229 CLUB CANCELLED 47 OTHER 1,193 <hr/> TOTAL 1,469	CLICK HERE FOR CUMULATIVE MEMBERSHIP DATA	TOTAL FAMILY UNIT MEMBERS 4,068 FAMILY MEMBERS PAYING HALF DUES 2,075